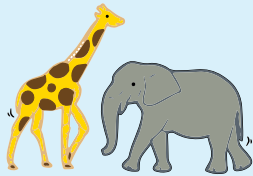


HOLIDAY ITINERARY #1

FAMILY FUN

Head to Western Sydney Parklands for a guaranteed weekend of family fun. With lots of different activities, there's plenty to keep the entire family entertained.

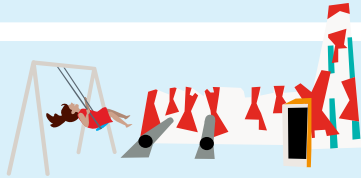
DAY 1



Start your family adventure with a visit to the new **SYDNEY ZOO** where you'll meet animals from all over the world. Home to over 1,000 species including tigers, chimps, koalas, elephants and experience Australia's largest Reptile and Nocturnal house. Plus, don't miss a wide range of close-up animal encounters like Sydney's only lion encounter.



HUNGRY? Grab some lunch while you're there or take a short drive to **EASTERN CREEK QUARTER** where you'll find lots of dining options.



If the kids still have energy to burn, head to the scenic **BUNGARRIBEE PARK**, where they'll enjoy the climbing tower, swings and flying fox at the park's ultra-modern playground.



In the evening catch a film retro-style at **SKYLINE DRIVE IN** – Sydney's only drive in cinema – and treat your family to dinner at the 1950s diner.

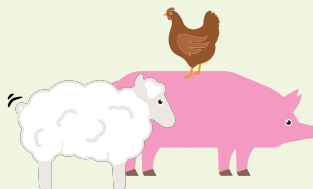


Need a place to stay? **ATURA BLACKTOWN** is a great option that's close by. During school holidays look out for the free weekend activities for kids, including cooking classes and arts and crafts.

DAY 2



Start the day at **LIZARD LOG** playground in Abbotsbury, with coffee and a bacon & egg roll from **CAFÉ SALUTI BY NOVELLA**.



Next, get ready to head to **CALMSLEY HILL CITY FARM**, with a quick stop at the **PARKLANDS' URBAN FARM STALLS** first. Located along Ferrers Road, you can pick up some of Sydney's freshest fruit and veg – great for an afternoon snack. Kids of all ages will love the real farm experience, especially the tractor ride and animal feeding.



For the little monkeys in your family, head to nearby **TREETOP ADVENTURE PARK** where they can test their agility on more than 100 elevated obstacle courses... or back to Blacktown for the ultimate afternoon of thrills and spills at **RAGING WATERS SYDNEY**. From December the water park will stay open until 8pm at weekends.

stay & play

in Sydney's
biggest backyard





BUNGARRIBEE PARK

SYDNEY ZOO

SYDNEY MOTORSPORT PARK

SYDNEY DRAGWAY

SKYLINE DRIVE-IN

RAGING WATERS SYDNEY

ATURA HOTEL

WYLDE MTB TRAIL

CALMSLEY HILL CITY FARM

TREETOPS

Stay & play

in Sydney's biggest backyard



Western Sydney Parklands



↓ CAMPBELLTOWN