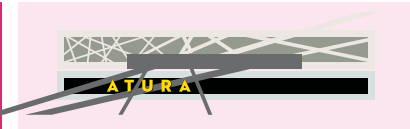


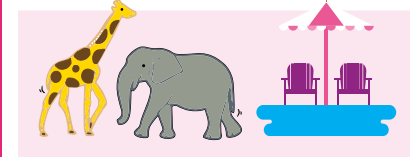
★ 72 HOUR 'PLAYCATION' ★

For the ultimate staycation, spend a leisurely long weekend getting active and back to nature in Western Sydney Parklands. There's plenty to see and do in Sydney's biggest backyard.

FRIDAY



Drop your bags at **ATURA BLACKTOWN** before heading to one of Sydney's oldest pubs for lunch at the **ROYAL CRICKETERS ARMS HOTEL**.

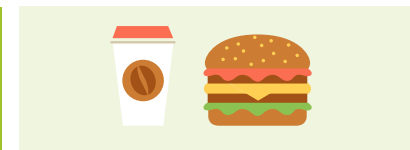


Next hop on over to the new **SYDNEY ZOO** for some magical animal encounters with meerkats, big cats and more! Or head back to **ATURA BLACKTOWN** and laze the afternoon away by the swanky pool.



Up for a memorable night out? Book into **SKYLINE DRIVE-IN**, Sydney's only drive-in cinema, and step back in time as you watch a movie on the big screen from the comfort of your car.

SATURDAY

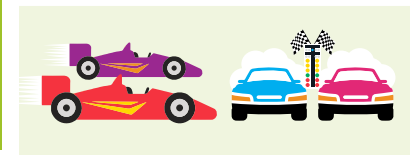


Head to local pop-up **STALLION BURGERS** at **BUNGARRIBEE PARK** for your caffeine fix and an all-day breakfast. Or if you're feeling creative, cook up your own brekky on one of the many free barbecues found in the Parklands.



Time to work off those bacon and egg rolls with a wander along the **BUNGARRIBEE TRAIL** where you might spot some kangaroos and wallabies that live along the grassy Cumberland Plains.

Or head to **RAGING WATERS SYDNEY**, just a short drive away, for a day of splashing and sliding through Sydney's best waterpark!

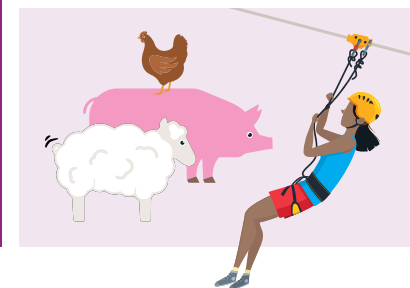


If you're up for some action on four wheels, spend the night with fellow rev-heads at **SYDNEY MOTORSPORT PARK** or **SYDNEY DRAGWAY**, both family friendly venues, before returning to **ATURA** for dinner at **ROADHOUSE BAR & GRILL**.

SUNDAY



Rise and shine, it's your last day to play in Sydney's biggest backyard. Start with a bargain and a brekky roll at Blacktown's **DRIVE IN MARKETS**, open 7am to 1pm every Sunday.



Then head south to the Abbotsbury area for a fun-filled day of bushland adventure. Visit **CALMSLEY HILL CITY FARM** for a true farm experience, swing from the trees at **TREETOP ADVENTURE PARK** (if you dare!) and explore the many tracks and trails for walking, running and cycling around **LIZARD LOG**, **THE DAIRY** and **PLOUGH AND HARROW PARK**. Get your fill of nature and end your 'playcation' with stunning sunset views of Sydney's skyline from **MOONRISE LOOKOUT** and **SUGARLOAF RIDGE**.



BUNGARRIBEE PARK

SYDNEY ZOO

SYDNEY MOTORSPORT PARK

SYDNEY DRAGWAY

SKYLINE DRIVE-IN

RAGING WATERS SYDNEY

ATURA HOTEL

WYLDE MTB TRAIL

CALMSLEY HILL CITY FARM

TREETOPS

Stay & play

in Sydney's biggest backyard



↓ CAMPBELLTOWN